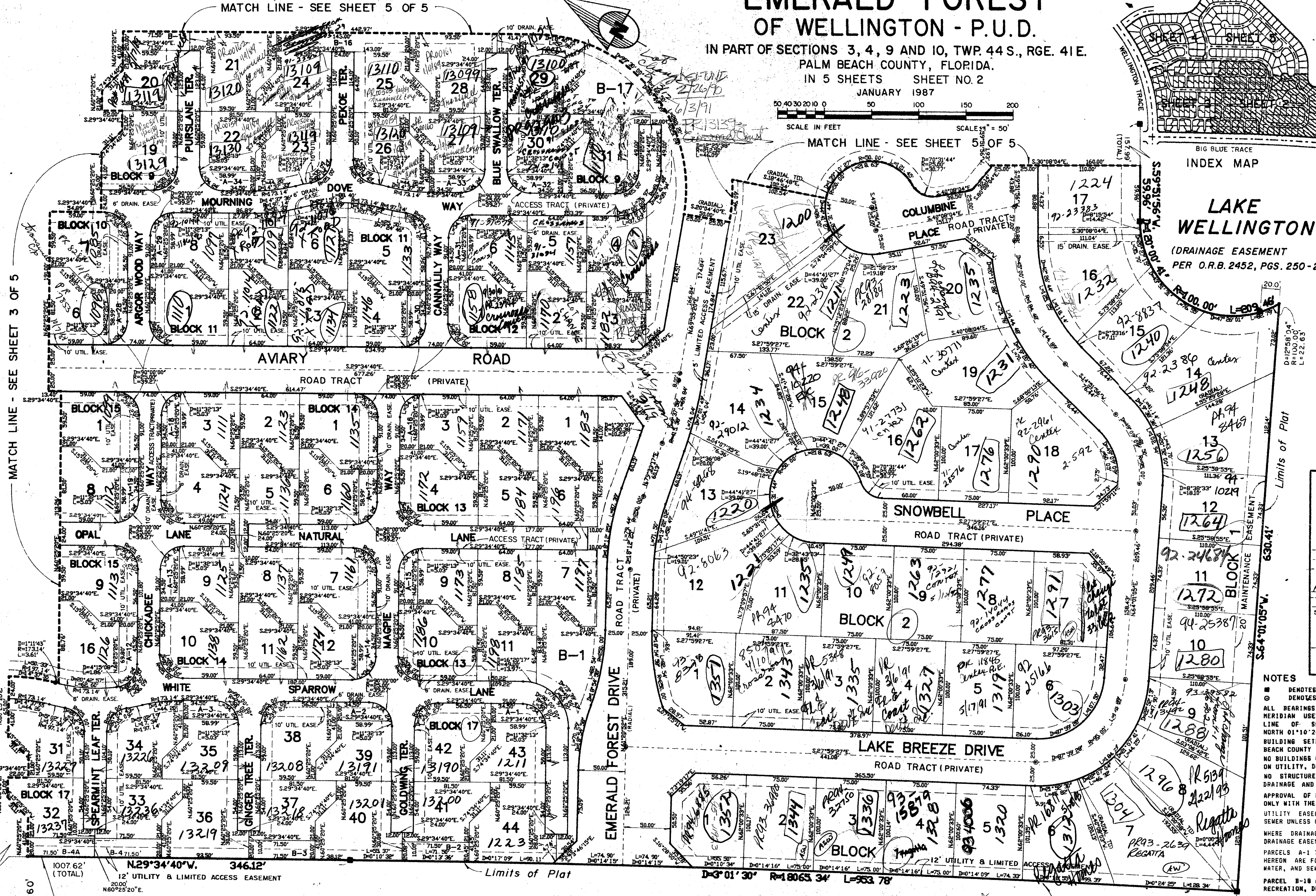
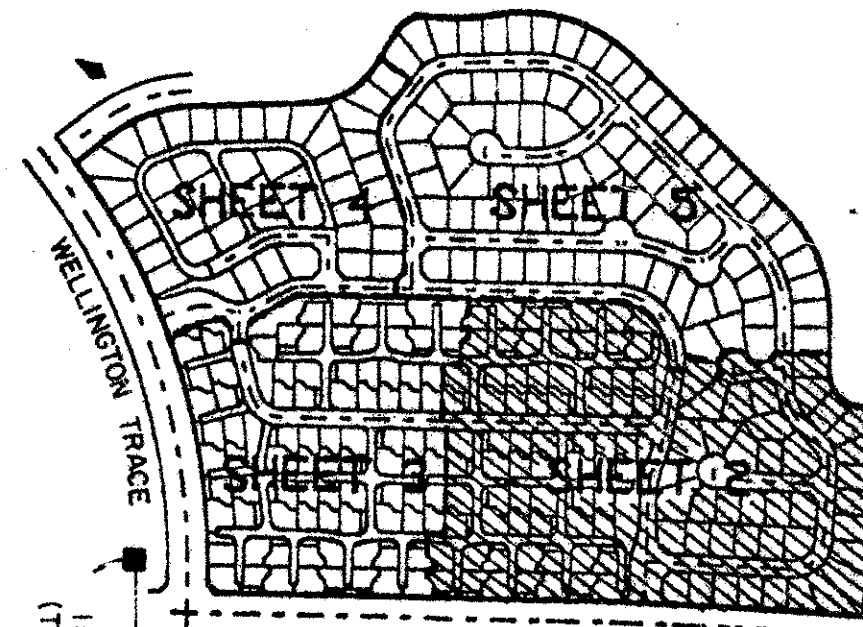
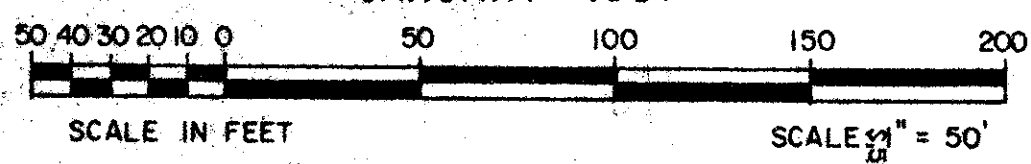


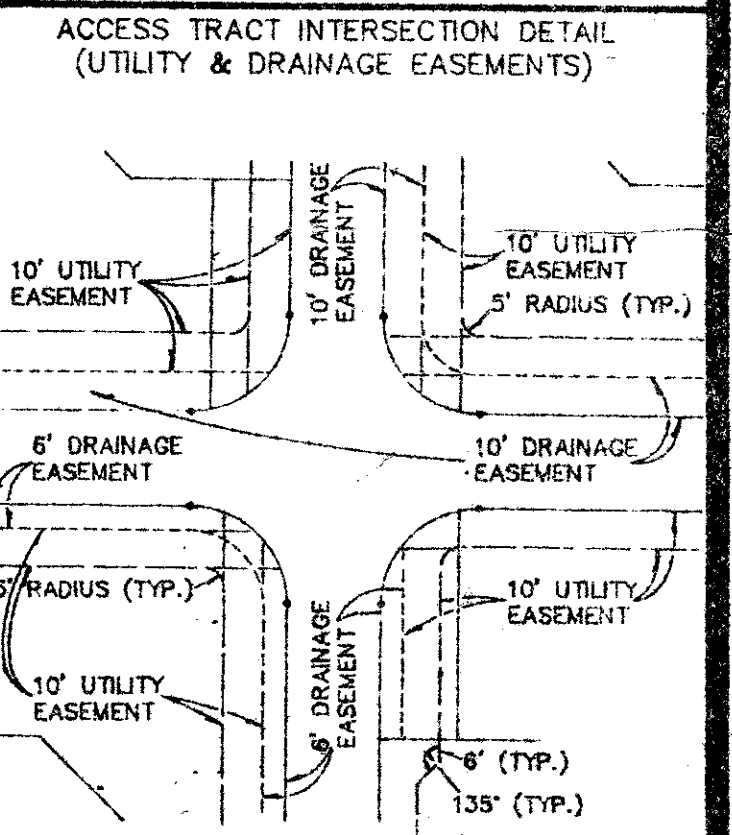
# EMERALD FOREST OF WELLINGTON - P.U.D.

IN PART OF SECTIONS 3, 4, 9 AND 10, TWP. 44 S., RGE. 41 E.  
PALM BEACH COUNTY, FLORIDA.  
IN 5 SHEETS SHEET NO. 2  
JANUARY 1987

# 178



BOOK 10  
PAGE 118  
RECORD 118  
FILED IN 111



**NOTES**

- DENOTES PERMANENT REFERENCE MONUMENT
- DENOTES PERMANENT CONTROL POINT
- ALL BEARINGS SHOWN HEREON ARE RELATIVE TO AN ASSUMED MERIDIAN USED THROUGHOUT WELLINGTON - P.U.D. THE WEST LINE OF SECTION 10-44-41 IS ASSUMED TO BEAR NORTH 01°10'24" EAST.
- BUILDING SETBACK LINES SHALL BE AS REQUIRED BY PALM BEACH COUNTY ZONING REGULATIONS.
- NO BUILDINGS OR ANY KIND OF CONSTRUCTION SHALL BE PLACED ON UTILITY, DRAINAGE, OR WATER AND SEWER EASEMENTS.
- NO STRUCTURES, TREES OR SHRUBS SHALL BE PLACED IN THE DRAINAGE AND MAINTENANCE EASEMENTS.
- APPROVAL OF LANDSCAPING ON UTILITY EASEMENTS SHALL BE ONLY WITH THE APPROVAL OF ALL UTILITIES OCCUPYING SAME.
- UTILITY EASEMENTS ARE FOR PUBLIC UTILITIES, WATER AND SEWER UNLESS OTHERWISE NOTED.
- WHERE DRAINAGE EASEMENTS AND UTILITY EASEMENTS CROSS, DRAINAGE EASEMENTS SHALL TAKE PRECEDENCE.
- PARCELS A-1 THROUGH A-37 AND B-1 THROUGH B-17 AS SHOWN HEREON ARE FOR OPEN SPACE/COMMON, DRAINAGE, UTILITY, WATER, AND SEWER PURPOSES.
- PARCEL B-18 AS SHOWN HEREON IS FOR OPEN SPACE/COMMON, RECREATION, DRAINAGE AND UTILITY PURPOSES.
- DEDICATIONS TO COUNTRY HOMES AT EMERALD FOREST HOMEOWNERS ASSOCIATION, MANOR HOMES AT EMERALD FOREST HOMEOWNERS ASSOCIATION, AND EMERALD FOREST ROAD ASSOCIATION, ARE NOT INTENDED TO CREATE ANY RIGHTS IN FAVOR OF THE GENERAL PUBLIC.

THIS INSTRUMENT WAS PREPARED BY:  
PAUL J. FOTORNY OF DAILEY-FOTORNY, INC.  
5050 TENTH AVENUE NORTH, SUITE B  
LAKE WORTH, FLORIDA 33463

**Dailey-Fotorny, inc.**  
land surveyors, planners, engineers  
Phone 305-965-8787

GREENVIEW SHORES NO. 1 OF WELLINGTON - (P.U.D.)

EMERALD FOREST 56/178

MATCH LINE - SEE SHEET 3 OF 5

MATCH LINE - SEE SHEET 5 OF 5

MATCH LINE - SEE SHEET 5 OF 5

MATCH LINE - SEE SHEET 5 OF 5

Limits of Plat

Limits of Plat

Limits of Plat

D-3°01'30" R=18063.34 L=963.78

BIG BLUE TRACE  
P.B. 31, PGS. 113-115

ADD. BY  
CHECKED BY

0332-017